

Lullaby of Birdland

Words by George David Weiss
Music by George Shearing

Standard tuning

♩ = 120

(♩ = $\overset{\frown}{\text{♩}} \overset{\frown}{\text{♩}}$)

A

Fm7

Dm7b5

G7

C7

Fm7

s. guit.



Lull a by of Bird land that's what I al ways hear
Have you ev er heard two tur tle doves bill and coo

Bbm7

Eb7

Cm7

Fm7

Bbm7

Eb7



when you sigh Ne ver in my word land could there be ways to re
when they love That's the kind of ma gic mu sic we make with our

1.

Abmaj7

Db7

C7

2.

Abmaj7 Eb7

Abmaj7



veal in a phrase how I feel lips when we kiss

B

F7

Bbm7

Eb7



And there's a wee py old wi llow He rea lly knows how to cry

Abmaj7

F7

Bbm7



That's how I'd cry on my pill ow

Eb7

Abmaj7

C7



if you should tell me fare well and good bye

A

Fm7

Dm7b5

G7

C7

Fm7



Lull a by of Bird land whis per low Kiss me sweet

Bbm7

Eb7

Cm7

Fm7

Bbm7

Eb7

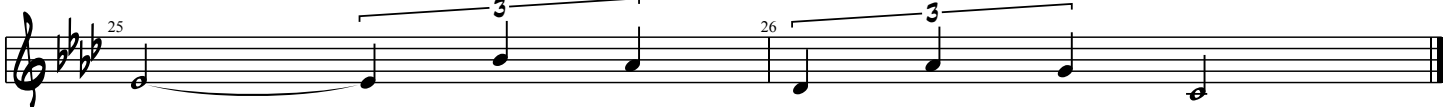


and we'll go fly ing high in Bird land high in the sky up a

Abmaj7

Db7

C7



bove all be cause we're in love